

Historic, archived document

Do not assume content reflects current scientific knowledge, policies, or practices.



-:- Wonderful Offers of Plant Bargains -:-

Plants are dormant now. The soil is moist and mellow and plants planted now have a chance to get established for early spring growth.

ORDER NOW
All plants in this list will be shipped Prepaid.

**ORIENTAL POPPIES
NEW VARIETIES**

New color that add dash and exotic beauty to your garden. Planted soon will bloom next year. Fine 2-year plants, guaranteed true to name and color. Some are new European varieties. **Henri Cayeux**—purple wine. Plant in shade. **Purity**—very large. Pure soft pink. **Joyce**—tall, bright cerise red. **Mrs. Ballegró**—massive salmon pink. **Cavalier**—tall, crinkly dark red. **Orange Perfection**—huge, flame orange. **Jeannie Mawson**—tall, geranium pink. **Perry's White**—silvery white, purple base. 50c each—any three \$1.20 postpaid. All eight varieties labeled \$3.00 prepaid. Order Now. Planting instructions sent FREE. ..

BARGAINS IN FINE HARDY PLANTS

Planted Now Will Bloom Next Year

All plants dug fresh. SHIPPED PREPAID.

- 10 Snowball Hydrangea, white bloom \$1.00
- 10 Lysemachia, tall yellow clusters like Phlox. Like shade best. New \$1.00
- 10 Evergreen Candytuft, fine creeper \$1.00
- 20 Coreopsis, yellow, fine cut flower \$1.00
- 12 Red-leaf Barberry, fine plants, red leaves all summer. Like sun \$1.00
- 12 White Spirea. Fine shrubs \$1.00
- 10 Hardy Sweet Pea, assorted colors \$1.00
- 20 Hollyhocks, fine assortment \$1.00
- 6 Primrose, assorted. Bloom in May \$1.00
- 10 Mertensia. Va. Blue Bells. Fine \$1.00
- 6 Red Russian Lily. Hardy and fine \$1.00
- 16 Delphinium English Hollyhock strain. Finest assortment of colors \$1.00
- 12 Red Painted Daisy, dark red with yellow center. Fine cut-flower \$1.00
- 16 Columbine, long spurred hybrids. Fine assortment, beautiful colors \$1.00
- 10 Giant Hibiscus. Large hardy, fine brilliant colors. Sun or shade \$1.00

5 Brilliant \$1.00 Poppies

THIS IS HARMON'S BIGGEST POPPY BARGAIN

These five Poppies will give you a brilliant, fiery display of color for your garden, in all brilliant shades. All fine healthy plants selected from our surplus stock regardless of list price of varieties selected. Varieties our choice. A wonderful Poppy value.

Special Prices on Fine Shrubs

We offer some fine, well rooted plants, two and three years old. Plant now. You can plant a hedge or border for just a little money and we guarantee the plants will please you. A REAL BARGAIN.

2 for 50c, 5 for \$1.25, 10 for \$2.00 or 20 plants for \$3.85.

Prepaid. No extra charges.

CORNUS—(Siberian Dogwood). Grows five feet shade or sun. Bright red branches in winter. Light green foliage with beautiful autumn colors.

DEUTZIA—tall growing, likes shade. Grows 6 feet covered with clusters of bell shaped flowers in June. Good under trees.

FLOWERING QUINCE—Bushy shrub to 6 feet. Sun or shade. Glossy green leaves all summer. Red flowers in May in great profusion. Fire Bush.

FORSYTHIA or Golden Bell—Tall growing shrub with good foliage. The bright yellow flowers in early spring make it an outstanding item.

BUSH HONEYSUCKLE—One of the finest shrubs for tall hedge or screen. First shrub to leaf out and hold foliage foliage very late. Pink flowers in June, followed by red berries. Loved by birds.

HYDRANGEA—Hills of Snow—Showy, very large, white bloom in July. Fine shrub for shady places. Excellent for foundations and hedges.

HYDRANGEA P. G.—Grows 4 to 6 feet and bears large cone shaped blossoms August until frost. Flowers are white and turn pink.

MOCK ORANGE—Old Fashioned Syringa. Grows tall and the white blossoms in May and June are very fragrant. Fine for borders and screens.

PUSSY WILLOW—French. Blooms very early with large silvery catkins shading to pink. Can be easily forced into bloom in January and February.

SPIREA VAN HOUTTI—Well known white spirea with fountains of bloom in May and June.

SPIREA ANTHONY WATERER—Fine dwarf shrub grows 2 1-2 feet tall. Covered with bright red bloom in July and intermittently until frost.

SPIREA FROBELI—Nice dwarf shrub with pretty foliage and brilliant autumn color. Rose-pink flowers in July are very attractive.

SPIREA THUNBERGII—Feathery foliage of light green and brilliant orange in autumn. Grows 4 feet. White flowers. Very early. Very fine.

SNOWBERRY—Medium size. Thrives in shade, light green foliage. Large white berries in autumn.

SNOWBERRY CHENAULTS—New attractive foliage, compact growing, large coral pink berries.

TAMARIX AFRICAN—Tall with feathery foliage like a fine evergreen. Pink flowers in May. Very attractive and thrives in difficult places.

Delphinium

New, Sensational, Double Delphinium.

This season we offer the new Pacific hybrids with immense double flowers of pleasing combination of pink, lavender, blue and purple. The plants grow about five feet tall and the foliage is mildew resistant. Surely you will want some of these fine hardy delphinium. We can supply you with pure white white double delphinium also.

Fine Plants .30 each, 3 for .85, 6 for \$1.50, 12 for \$2.75 postpaid

BLACKMORE & LANGDON DELPHINIUM

Singles and double mixed in a wonderful array of color combinations. Beautiful flowers fine for cuttings, hardy and worthwhile. We offer fine plants of this strain as the Hollyhock Delphinium

.20 each, 3 for .55, 6 for .95 or 12 for \$1.85 postpaid.

GALLARDIA PORTOLA HYBRIDS

Hardy garden flower, fine for cuttings. Blooms June to frost. Large easy flowers with Indian red petal tipped with yellow. Showy and pretty.

.20 each, 3 for .50, 6 for .85 or 12 for \$1.65 postpaid.

GALLARDIA SUN GOD IMPROVED

A wonderful garden flower. Foliage is grey green, neat and upright. Flowers grow on stems two feet tall. Color rich chamois yellow. Beautiful cut flower. They bloom the entire summer regardless of drought or heat.

.50 each, 3 for \$1.35, 12 for \$4.50 postpaid

HARDY PHLOX

Phlox are easily grown and the bloom is very showy, colorful and effective from July until frost. Phlox will grow in sun or shade. They like a well drained location and the soil should be deeply spaced and enriched with well rotted manure or bone meal. Never let the plants go to seed. Keep well watered but do not sprinkle the foliage.

We offer some of the newest and choicest varieties that will bloom next year:

- Africa—Deep scarlet. One of the best.
- Beacon—tall, cherry red.
- Border Queen. Very large pure pink.
- Break O Morn. Delicate pink with red eye. Fragrant.
- Daily Sketch. Robust grower. Tall large salmon pink, crimson eye.
- Eiffel Tower. Large flower of salmon-pink, bright red center.
- E. I. Farrington. Beautiful salmon-pink with white eye.
- Firebrand. Very popular. Brilliant scarlet.
- Glenwood. Cerise. Color of American Beauty rose. New.
- Hauptmann Koehl. Tall dark red. Large flowers.
- Lillian. Beautiful pink with light lavender eye.
- Mrs. Charles Doer. Large flower. Beautiful shade of lavender.
- Miss Lingard. Early white and very nice.
- Morgenrood. Deep rose red, large flowers.
- Mrs. Scholten. Very large bright pink.
- Maid Marion. Beautiful lilac-blue. Very large flowers.
- Paladin. Salmon-pink with red eye.
- Rheinlander. Clear salmon-pink. Fine.

.25 each; 3 for .65; 6 for \$1.10 or 12 for \$2.00.

Labeled and postpaid.

JAPANESE IRIS

These gorgeous flowers bloom later than the regular Iris and are very showy. The flowers are large and come in many fine shades. Some are double and all are worth planting. You will prize these blooms in your garden. Plant them now.

Fine Plants .35 each, 3 for \$1.00, 12 for \$3.50

One of each (8 varieties) labeled and postpaid \$2.35

Catherine Parry—Double blue shading to rich purple, tufted in center.

Columbia—Double blue with white veins. Yellow throat. A striking variety.

Eleanor Parry—Double, claret purple, yellow throat. Fine for cutting.

Fascination—Double mauve pink with lighter veins. Unusual and beautiful.

Gold Bound—Large double pure white with yellow throat. Fine, cut flower.

Koko-no-Iro—Six royal purple petals with yellow throat. Very brilliant.

Mahogany—Latest of all. Large double flowers of purple mahogany red. Prettily crested.

Purple and Gold—Double violet-purple with showy golden throat.

Giant Hibiscus

Perfectly hardy. This unusually showy plant blooms first year from July to frost. Grows 4 feet tall and the immense flowers are 8 inches across. Gorgeous red shades. Also bright pink and pure white. Order the colors you prefer. This plant thrives in all soils and likes sun or partial shade. 3-year old plants, 35c each; 3 for \$1.00; 12 for \$3.50 prepaid.

HARDY LILIES

Madonna. Lovely white, fragrant Lilies on tall stems blooming in June. These are easy to grow if you give them full sun and good drainage. Hardy and bloom first year.

30c each; 3 for 75c; \$2.85 per dozen, postpaid.

Regal Lily. Large white Lily with yellow throat and pink outer surface. Hardy and fine. Large bulbs will bloom first year.

20c each; 3 for 50c; dozen \$1.45, postpaid.

Elegans or Red Russian Lily. Compact grower and looks like giant Azelea. Blooms in June with large orange-scarlet to red flowers. Hardy and fine.

20c each; 3 for 50c; \$1.50 per dozen, postpaid.

Philippinense. Blooms from August to frost. Large trumpet-shaped flowers on white with pale green throat. Very hardy and easily grown. Blooms first year and well worth having.

30c each; 3 for 75c; \$2.85 per dozen, postpaid.

Henryi. A grand garden Lily. Blooms in large, showy flowers of rich golden yellow in August. Known as the yellow Japanese Lily.

30c each; 3 for 75c; \$2.85 per dozen, postpaid.

Speciosum Rubrum. Japanese Lily. Hardy and easy to grow. Large pink flowers dotted with crimson. Fragrant and blooms in August and September.

35c each; 3 for \$1.00

The Harmon Nursery Prospect, Ohio

French Lilacs

These fine hardy shrubs bloom very young and grow into fine specimen plants. They are easy to transplant and thrive with just ordinary care. We offer many colors in both single and double flowering sorts.

SINGLE VARIETIES—

- Chas. X—Violet-red flowers. Very heavy bloomer.
 Hugo Koster—Very large trusses of blue to violet purple.
 Ludwig Spaethe—Long trusses, late. Dark wine-red to purple.
 Marie Le Graye—Long trusses of pure white.
 Jan Van Tol—Enormous flowers and trusses of purest white.

DOUBLE VARIETIES—

- Alphonse Lavalee—Long shapely trusses of blue violet.
 Chas. Joly—Slender compact trusses of dark red.
 Mme. Casimir Perier—Large trusses of cream lilacs.
 Mme. Lemoine—Rather dwarf. Large trusses of pure white.
 Michael Buckner—Heavy trusses of blue intermixed carnine rose.
 Montaigne—Very large individual flowers of mauve pink.
 Paul Theiron—Large flowers of claret rose.
 Pres. Grevy—Compact, long stemmed, soft blue. Very fine.
 Waldeck Rosseau—Best late variety. Tender pink white center.

Any above varieties in well rooted plants.

1½ to 2 feet tall .80 each; 3 for \$2.25; 6 for \$4.00; 12 for \$7.50
 2 to 3 feet tall \$1.00 each; 3 for \$2.75; 6 for \$5.00; 12 for \$9.00

PERSIAN LILACS—Long narrow leaves and willowy branches mark this fine shrub as different. Blooms very young with long trusses of dainty flowers colored beautiful violet red. Very hardy and very fine. 1 1-2 to 2 ft. plants that will bloom first season

.60 each, 3 for \$1.45; 6 for \$2.75

6 Giant Peonies \$1.59

This is Harmon's Biggest Peony bargain. We send you six beautiful Giant Flowering Peonies—varieties our choice, colors labeled. \$3.00 to \$4.00 value. Colors red, pink and white, two of each, or you may state color.

Other prices: 3 for 85c; 9 for \$2.47; 12 for \$3.15

10 Hardy Phlox \$1

Full color range—shades of white, pink, orange, red, salmon, and blue. Each variety different, all high grade varieties. Strong, healthy, field-grown plants. Hardy. Value of collection \$2.00 to \$3.00. A real bargain. Varieties not labeled.

RED LEAF JAPANESE BARBERRY—

Planted in full sun these plants are rich bronze-red all summer thru. Adds beautiful color to the shrub border and foundation planting. Grows four feet tall and very compact. Fine hedge plant. Perfectly hardy.
Strong 3 yr. plants 12 to 18 inches tall 30c each, 3 for 85c;

6 for \$1.60; 12 for \$3.00, postpaid

Smaller plants, 2 yr. but well rooted, 10 for \$1.00, 25 for \$2.25;

50 for \$4.00; 100 for \$7.00, postpaid.

GREEN LEAF JAPANESE BARBERRY—

Same as above except leaves are green thru summer, turning orange and red in autumn. Red berries in winter. Very pretty and hardy.

Strong 3 year plant 12 to 18 inches tall, 20c each; 3 for 55c;

6 for \$1.00; 12 for \$1.75, prepaid.

Special prices quoted on larger quantities.

Why Not Plant Some Quince Bushes?

They really make a large shrub and the large fragrant pink blossoms are beautiful in the spring. These trees are very hardy and soon come into bearing. Large, springthly flavored, fragrant quinces are easy to grow and very desirable in preserves, marmalades, quince honey, etc.

Fine three year old tree 3 to 4 feet tall, 79c each; 3 for \$1.99; six trees for \$3.89, prepaid.

We have two varieties—Orange and Rea's Mammoth. Both are fine flavored and excellent kinds. Plant 8 feet apart.

Do You Like Bartlett Pears?

Who don't. Or maybe you would like some of the rich Dutchess to eat later. You can have both of them growing and bearing on your lot, with our dwarf trees.

Bartlett for September use and Dutchess for October. These can be planted twelve feet apart.

These trees have been dwarfed only in size of growth and will bear large quantities of rich, full-flavored pears without taking up a lot of room. We offer fine thrifty three year old trees at

.79 each; 3 for \$1.99 or 6 for \$3.99, prepaid.

We have fine cherry trees in Montmorency, Early Richmond and the sweet black cherries in fine three year old trees at

79c each; 3 for \$1.99; 6 for \$3.89, prepaid

KOLKWITZIA—BEAUTY BUSH

This new shrub from China is hardy and makes a beautiful plant with gracefully arching branches. Leaves are small and attractive. The pink flowers appear in great profusion thru June. Grows in any soil but does best in clay.

Fine plants 18-24 inches tall .60 each, 3 for \$1.50
 Specimen plants 3 to 4 feet tall .85 each, 3 for \$2.35

BLEEDING HEART

Beautiful romantic, old-fashioned bleeding hearts are loved by everyone. Thrives in shady locations and bloom with Jonquils in early may. Fine field grown plants that will bloom first year.

40c each; 3 for \$1.00; 6 for \$1.85, postpaid.

PYRETHRUM or PAINTED DAISY

Beautiful daisies on long stems, fine for cutting and always in bloom for Decoration Day. Easy to grow, perfectly hardy and will bloom first year. We offer fine field grown plants.

James Kelway—Bright velvety red with yellow center. Or strain of these is superb.

Rose Pink—Fine pink shades with yellow center.

Elder—Large size of purest white. Yellow centers. Very stiff stems and superb for cutting.

25c each; 3 for 65c; 6 for \$1.10; 12 for \$2.00 postpaid.

COLUMBINE

Long spurred beauties of Scott Elliott strain. Wonderful combination of colors in blue, cream, pink, yellow, red, white and purple. Plant in partial shade in rich soil. Will bloom first year. Strong two year field grown plants.

20c each; 3 for 50c; 6 for 85c; 12 for \$1.60

These are shipped postpaid.

CRIMSON STAR

Very large with crimson sepals and spurs. Petals are white. Beautiful and free flowering. Something new and worth having.

.50 each; 3 for \$1.50; 12 for \$4.50, postpaid.

PLATYCONDON or BALLOON FLOWER

Fine for sunny border. Likes light well drained soil. Flowers are bright deep blue on long stems. Blooms all summer. Hardy and very desirable.

Fine 2 year plants .20 each; 3 for .50; 6 for .85 or
 12 fine plants for \$1.60, postpaid.

SCABIOSA

Lavender blue flowers from July to September. Fine for cutting. Thrives in sunny borders and easy to grow. Price same as Platycondon above.

Flowering Crab Trees

These hardy flowering trees are very showy and desirable. Flowers in great profusion in reds, pinks, and white and many of them have very showy colored fruits in autumn. Mature into small trees and are fine for specimen or group plantings. The trees we offer are grafted, are four and five years old and will soon flower. Trees are 3 to 4 feet tall now.

Your Choice .87 each; 3 for \$2.17; 6 for \$3.93

Bechtels. Bloom in May with very fragrant double pink flowers that look like roses. Very showy. Grows into a small compact tree.

Coronaria. The wild sweet crab. Clusters of bright rose pink single flowers with delicious fragrance. Fruit yellow with pink cheek. Compact, round topped tree.

Eleyii. Pretty purplish foliage. Flowers in great profusion of semi-double dark red. Small fruits are shining red.

Dolga—Upright growing, light pink bloom in spring. Very showy in autumn with vivid red fruits which hang in clusters. This fruit is fine for jellies also.

Neidswetzkyana or Red Russian. One of the iron-clads. Very hardy. Foliage has red tints and bark is purple. Flowers in great profusion of very deep rose pink of large size. Fruit is clusters of dark shining red.

Prunus Newport. Showy pink flowers before leaves appear. The foliage is bright red in early spring and turns to deeper red in summer. Perfectly hardy. Very desirable.

50 Crocus \$1

These are brave, saucy flowers that seem to smile reassuringly at mortals who are tired of low-hung clouds and gray gloomy days. They are charming in the lawn or charming in borders. Mixture of yellow, white, blue and striped.

Prices: 50 for \$1.00; 100 for \$1.87; 200 for \$3.49

The Harmon Nursery Prospect, Ohio

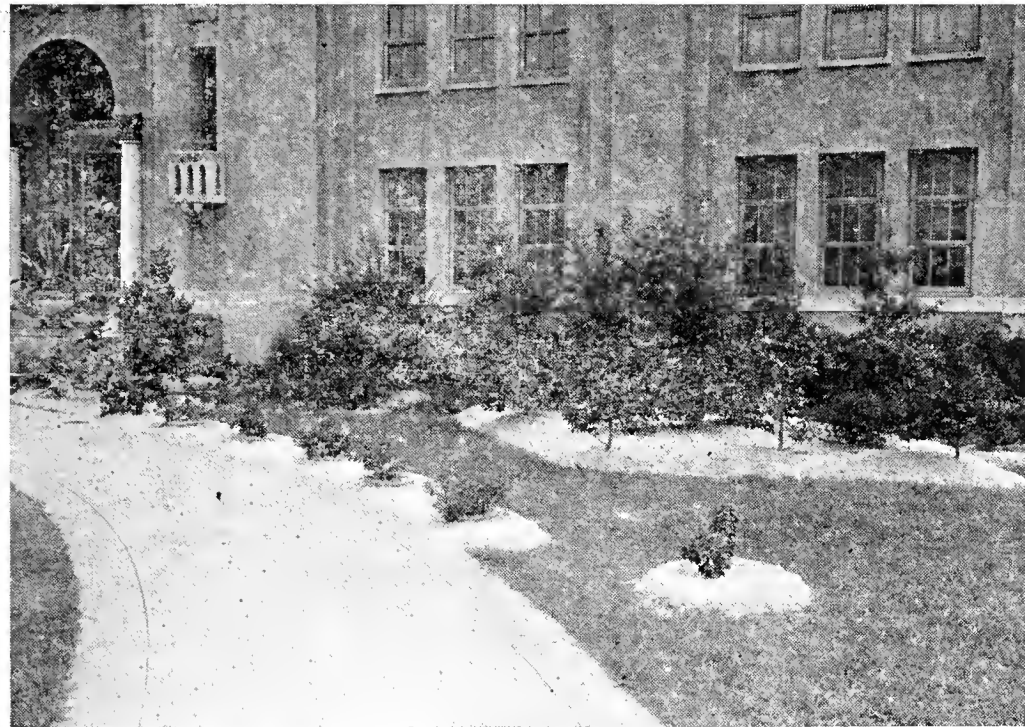
PROTECT YOUR PLANTS WITH THIS SUPERIOR MULCH

Godchaux's Horticultural Servall

MANUFACTURED BY GODCHAUX SUGARS, INC., NEW ORLEANS, LA.

Guard your plants against freezing out this winter, and from hooving out next spring, which is caused by freezing and thawing. SERVALL is ideal for newly set plants. It keeps the soil from drying out until new roots are formed.

SERVALL is shredded Louisiana Sugar Cane, with the sugar extracted (a 100% American Product). It is securely baled in "easy-to-handle" 100 pound bales, wrapped with paper and roped. It is dustless, odorless, sterilized and free from weed seeds and insects. After being properly applied, winds do not blow it away and rains do not wash it away. It remains to protect your plants. Servall Mulch is easy to apply.



SHRUBS MULCHED WITH SERVALL

SERVALL does not become soggy and wet like leaves, manure, peat or straw. This is a great advantage because roses and perennials such as Phlox, Peonies, Poppies, Daisies, Fox Glove, Canterbury Bells and many others, will smother and die under a wet mulch such as leaves, peat moss, manure, etc. To carry them through the winter successfully they must have a mulch that remains fairly dry. SERVALL is safe for all these. It is also an excellent mulch for strawberries.

This protection costs you nothing because SERVALL, when worked into the soil in the spring is worth all it costs as a humus and plant food. It is wonderful soil conditioner. However, it does not decompose or become humus until stirred into the soil. Plants such as Peonies, Hardy Lilies, Oriental Poppies and Holland Bulbs offer blast the blooms if mulched with manure. SERVALL is absolutely safe for these.

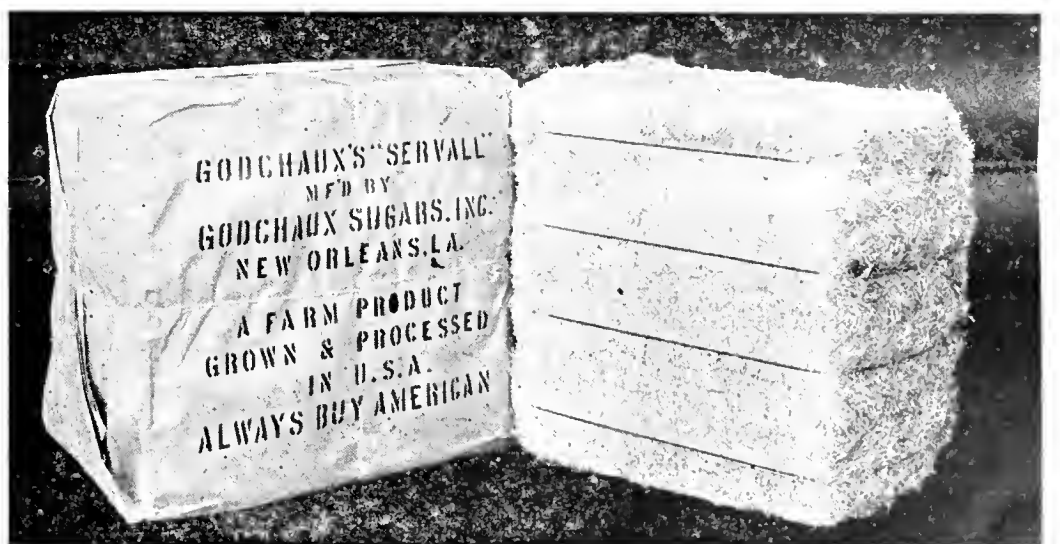
SERVALL SPECIALLY PROCESSED FOR HORTICULTURE ABSORBS QUICKLY MORE THAN FIVE TIMES ITS WEIGHT OF WATER, supplies soil humus, retains moisture and aerates the soil, all of which are essential for activating soil bacteria and for strong root development.

We have used this SERVALL mulch and can recommend it above all other material for the best and safest mulch protection for all perennial plants, bulbs, roses, shrubs, evergreens and shade trees. It is especially fine and beneficial to Azelea plants, Rhodendrons, Laurel, Daphne and all plants of their nature. It is also fine for lawns. Spread it ½ inch deep on new seed. One bale will cover an area 10 feet by 50 feet. One bale will amply mulch and protect 70 to 80 fine perennials, 500 to 700 tulips or other bulbs, or 40 to 50 shrubs, roses or evergreens.

We can furnish SERVALL at the following prices: \$2.00 per bale; 2 bales for \$3.95; 6 bales for 11.50; 10 bales for \$18.50, F. O. B. Prospect, Ohio.

SERVALL IS MANUFACTURED FROM LUXURIANT SUGAR CANE, grown in the Louisiana delta, where is the most fertile soil in the world. Add this fertility to the soil by means of SERVALL in your garden—It comes out again in your plants in sturdier growth and better flowers.

SERVALL is shredded and screen classified into sizes best suited for horticulture. It is perfectly sterilized by dehydration at an initial temperature of 1800 degrees Fahrenheit. It positively carries no weed seeds of any kind or any diseases. It is an absolutely pure, sanitary product and contains no dust or foreign material of any kind, as compared with Peat Moss. Servall is distinctly an American humus product. It is produced and manufactured on Louisiana farms and is obtainable throughout the year.



SECURELY WIRED, WRAPPED AND ROPED

Sold and Used by

THE HARMON NURSERY, Prospect, Ohio

Growers of Better Trees and Plants

SERVALL is worthy of your trial and we suggest that you order some now to protect your plants this winter.

